

DAME ETHEL WALKER 1861-1951



Seascape—"An Autumn Morning"

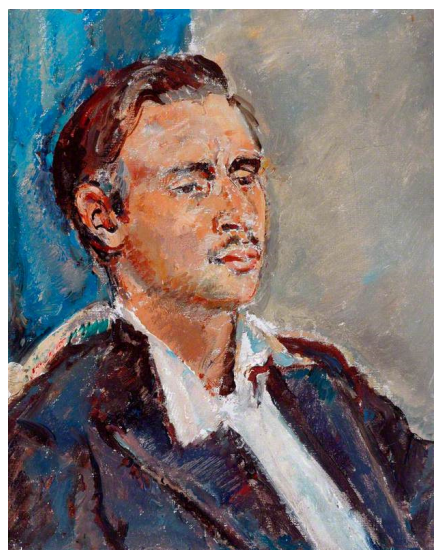
A view of Robin Hood's Bay, the favourite haunt of the artist who owned a fisherman's cottage above the cliffs overlooking the sea where this may have been painted in the autumn of 1935.

'when she returned to Robin Hood's Bay during the summer of 1935 she painted those wonderful sea pieces, miraculous evocations of the fleeting evanescent moods of sea and sky such as "An Autumn Morning".'



Robin Hood's Bay in Winter

Ethel Walker worked as a painter of many genres, including seascapes, landscapes and portraits and in 1900 she became the first woman member of the New English Art Club. She had a studio in Robin Hood's Bay which was used during her visits to the area, probably where many of her seascapes were painted.



Leo Walmsley

Ethel Walker's portrait of the author Leo Walmsley, Ulric's youngest son. Probably painted in 1929 when Walmsley was living in Robin Hood's Bay. It is believed it was at Walker's studio that Walmsley met Margaret, who was to become his second wife. She had become a regular visitor, helping Walker by cleaning her palettes and paint brushes and also often acting as a model.